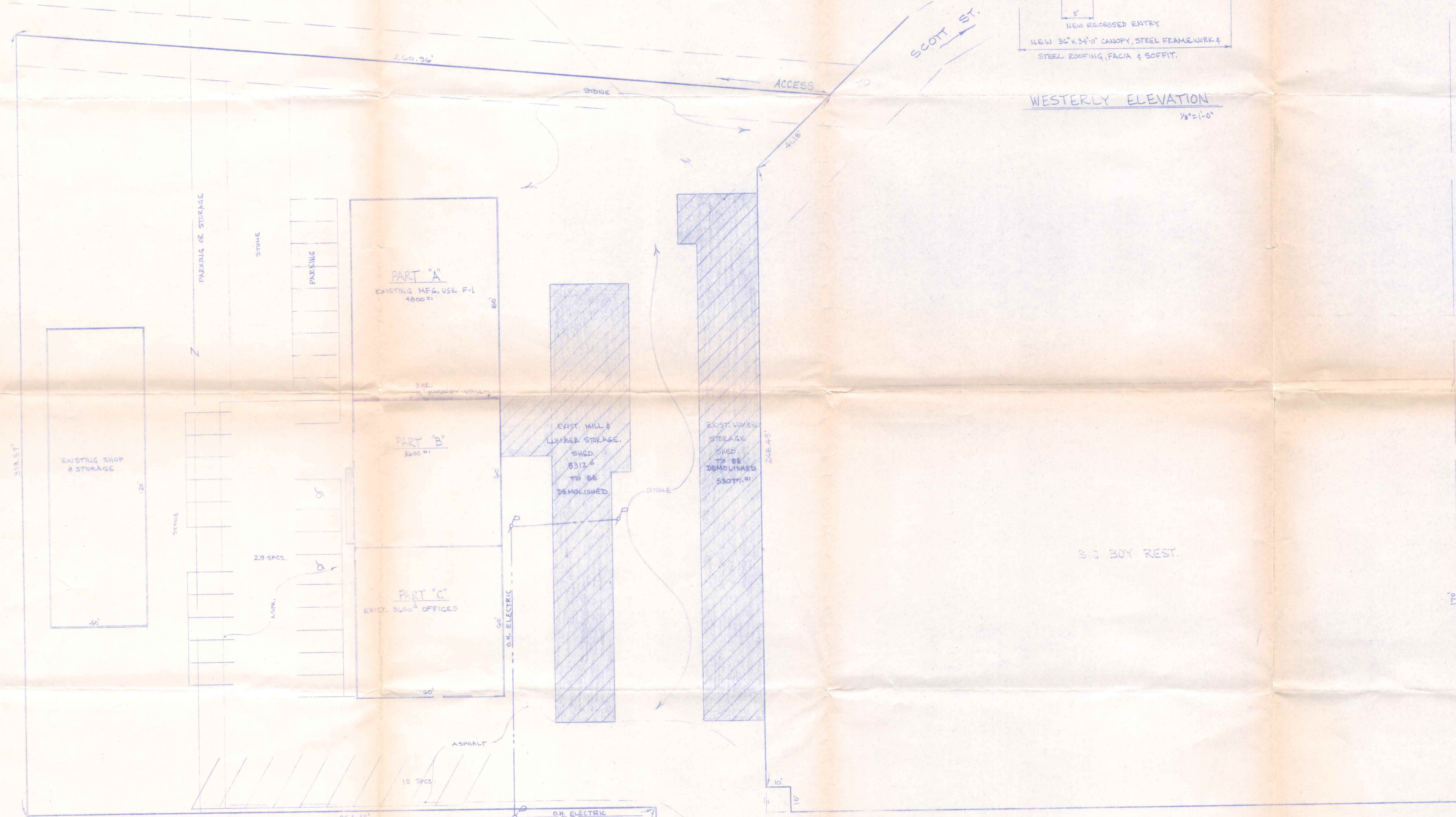


WESTERLY ELEVATION
1/8" = 1'-0"



NOTE: PARTS "A"-"B"-"C" IN THE EXISTING BUILDING TO REMAIN AS IS.
 THE WASTE MATERIALS FROM THE DEMOLITION ARE TO BE DISPOSED OF BY A BONDED AND INSURED CONTRACTOR AT SOME ACCEPTABLE OFF SITE FACILITY OR LOCATION.
 ALL ELECTRICAL SERVICES SHALL ALSO BE REMOVED.

1445 N. SCOTT		
1445 LANGE & LYTTLE, INC.		
10 SCOTT STREET	NAPOLEON, OHIO	
SCALE: NOTED	APPROVED BY:	DRAWN BY: E.D.S.
DATE: FEB. 1985		REVISED APRIL 1986
DEMOLITION PLAN		
NAPOLEON ENGINEERING & SURVEYING, INC.		DRAWING NUMBER: 1 OF 1